

Suitable for integration into the cabin of a recreational vehicle (motor home, boat), the battery monitor is designed to supervise and assess the state of health of the service battery. By accurately measuring voltage and current, and defining specific warning parameters, the device facilitates optimal battery management to help preserve the lifespan of the battery.

HIGH-PRECISION BATTERY MONITORING

The battery monitor functions like a power indicator, providing precise information on the status of the battery. Using a 500 A shunt, it measures both voltage and current, providing a range of data on the health of the electrical system. It provides real-time monitoring of:

- voltage,
- the input and output current,
- power consumption,
- input and output ampere-hours,
- ambient temperature,
- the battery charge percentage.

PROTECTS THE ELECTRICAL SYSTEM

- The monitor detects overloads and overheating incidents and triggers an early warning buzzer. It indicates when user-defined parameter levels have been exceeded:
 - charge/discharge current threshold (adjustable range from 0 to 500 A)
 - lower/upper voltage limit (adjustable range from 8 to 100 V)
 - maximum temperature limit (adjustable range from -20 to +100°C)



Supplied with:



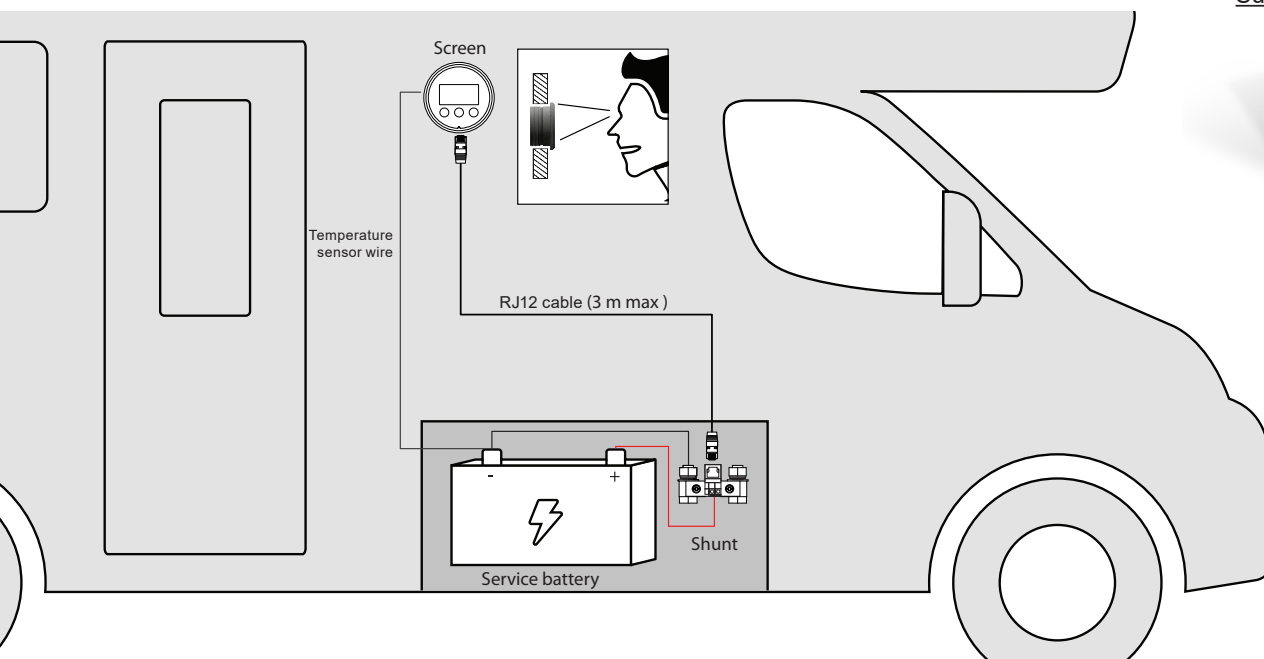
Shunt 500 A



RJ12 cable



Temperature sensor wire



TECHNICAL DATA

Power supply voltage range	8 V ~ 100 V
Measurable voltage range	8 V ~ 100 V
Measurable current range	0 ~ 500 A
Stand-by current	< 2 mA
Compatible battery voltage	12 V / 24 V / 36 V / 48 V / ...
Measurable battery temperature	-25°C ~ 60°C
Operating temperature	-10°C ~ 50°C
Diameter	63.05 mm